



Memory Upgrade for iMac - 1999 Installation Guide



**This Product is backed by a Limited Lifetime Warranty.
For complete warranty information visit www.edgetechcorp.com/register**

*The memory module for the iMac is easy to install,
but the steps in this guide should be followed exactly.
Please read this entire instruction guide before you begin.*

TO INSTALL A NEW MEMORY MODULE IN YOUR APPLE iMac

1. Turn off computer and disconnect the AC power supply. Disconnect any peripherals.
2. Place the computer face down on a soft padded surface.
3. Remove the screw securing the plastic cover (see *Figure One*).
4. With the plastic cover removed you can now see two screws, which must be removed. (See *Figure Two*).
5. Now remove the three or four cables in the middle of the photo. One unscrews and the next one (black cable) requires you to slightly lift a plastic clip and gently pull on the cable. The last two simply pull out. (See *Figure Two*.)
6. Remove the metal assembly by pulling gently straight UP - NOT OUT! (see *Figure Three*).
7. Remove the metal grate (heat sink) by pressing in the center and pulling up the sides. When the metal cover is removed, you will see the memory expansion slot located in the center of the computer chassis, as indicated by the white circle (*Figure Four*). (Note: *Figure Four* shows chassis with memory module installed.)
8. The memory module should gently, but firmly, be positioned in the expansion slot. Note: Hold the module by the edges and align its connector to the corresponding connector in the expansion slot. Do not force the module into the slot; the connector only allows it to fit one way. Once pushed into the slot it should look like *Figure Five*. Then push the module down until the pins snap around its edges (see *Figure Five*).
9. Reassemble and boot up computer. **Note:** Depending on the amount of RAM installed in the machine, there may be as much as 45 seconds between the Boot Chime and the first flicker of the screen.

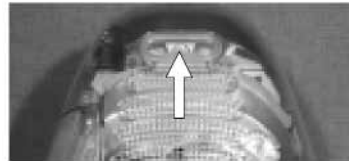


Figure 1. Plastic Cover Screw.

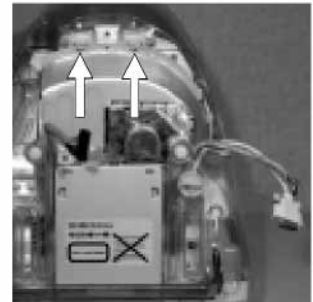


Figure 2. Screws & cables.



Figure 3. Metal Assembly



Figure 4. Opposite side of metal assembly (memory installed).



Figure 5. Positioning the memory module.

IMPORTANT

PLEASE CONTACT A QUALIFIED TECHNICIAN FOR ASSISTANCE IN INSTALLING OR USING THIS PRODUCT IF YOU ARE NOT FAMILIAR WITH DOING SO. ANY INSTRUCTIONS INCLUDED WITH THE PRODUCT ARE FOR CONVENIENCE ONLY AND ARE NOT INTENDED TO BE ALL-INCLUSIVE.



INSTALLING A SECOND UPGRADE

To avoid damage to modules, we advise removing the memory from the expansion slot before installing a second upgrade.

NEED
HELP?

TECH SUPPORT
www.edgetechcorp.com/support

1. Installing a second module requires the removal of the factory installed module and removal of the CPU card. To remove the CPU card, you must first remove the metal band which applies pressure to the heat sink and keeps it in place. After removing the band, you need to slip a small object (screwdriver, tweezers, etc.) under the lower left corner of the CPU card and GENTLY apply upward pressure- the card will unplug from its socket. Then pull the card towards you (two notched extensions will slide out of the metal bracket which surrounds the module). Grasp the CPU card and turn it over with the heat sink on the bottom (See *Figures Six and Seven*).

2. To remove the memory card, gently pry the metal clips away from both sides- the card should come UP. After the card is UP, pull it away from the socket. Replace it with your new module.

3. To reinstall the CPU Card, line up the two notches then push them back into the metal bracket and gently push down to seat the connector (force should be exerted on the front-right portion of the module). Now replace the metal band which applies the pressure on the heat sink and keeps it in place.

4. Make sure all cables are out of the way and replace the chassis into the machine by gently sliding it down into place. DON'T FORCE ANYTHING - it should slide in easily when everything is lined up correctly. Make sure the metal tabs (see *Figure Eight*) slide into appropriate grooves, which are visible through the wing windows. Replace the two screws at the top of the metal assembly and reattach cables.

5. Replace the plastic cover and the screw, which holds it in place. You're finished.

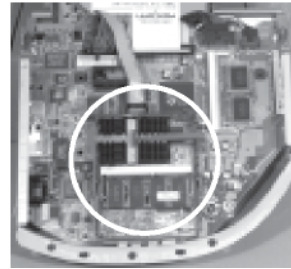


Figure 6. CPU Card Still in the Machine.

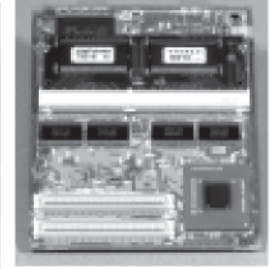


Figure 7. CPU Card Removed.



Figure 8. Metal tabs which seat in the wing windows, indicated by white arrows. VRAM is shown in the white circle.

INSTALLING VRAM

Follow steps one through six of the first section ("To Install a New Memory Module in your Apple iMac") for disassembly instructions. Also See *Figure Eight*.

With the metal assembly removed, you will see the VRAM expansion slot as shown in *Figures Nine and Ten*.

Hold the VRAM module by the edges and align the connector to the connector in the expansion slot (See *Figure Nine*). Push the module into the slot gently, then push the module down until the pins snap into place (See *Figure Ten*).

Figure 9. VRAM partially installed.

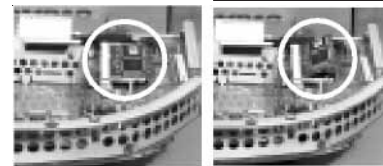


Figure 10. VRAM fully installed.

IMPORTANT

PLEASE CONTACT A QUALIFIED TECHNICIAN FOR ASSISTANCE IN INSTALLING OR USING THIS PRODUCT IF YOU ARE NOT FAMILIAR WITH DOING SO. ANY INSTRUCTIONS INCLUDED WITH THE PRODUCT ARE FOR CONVENIENCE ONLY AND ARE NOT INTENDED TO BE ALL-INCLUSIVE.

