

MigoSync Quick Start Guide



MigoSync software provides a safe, easy-to-use, traceless method of working on your personal files and email – including Microsoft Outlook®, Outlook Express®, Thunderbird®, and Lotus Notes® -- on borrowed computers, eliminating the need to bring along a PC or laptop of your own. Follow these instructions to create a MigoSync profile of your computer on your portable device so you can begin working remotely today!

1 MigoSync Installation

Using MigoSync Encrypted Zone

The MigoSync Encrypted Zone utility provides security for your computer profiles (data that MigoSync captures from your computer and stores on your portable device). It keeps your data in a storage area protected by AES 256-bit encryption; only the MigoSync user with the proper password can access it. Follow the steps in this section to add MigoSync Encrypted Zone protection to your MigoSync-enabled device.

Installing MigoSync Software for the First Time

- 1.1. Insert your MigoSync-enabled portable storage device into your computer's USB port.
- 1.2. Double-click the "My Computer" icon on the desktop (or under "Start").
- 1.3. Open the folder for your portable device, and then double-click the **MigoSetup** icon.

At the end of the setup process, you see one of two options:

- If your MigoSync package includes MigoSync Encrypted Zone, proceed to step #2 of this guide (next).



- If your MigoSync package does not include MigoSync Encrypted Zone, skip to step #5 of this guide.



Copyright © 2007 Migo Software, Inc.

MigoSync and the Migo logo are trademarks of Migo Software, Inc. All Rights Reserved. Windows, Outlook, and Microsoft Internet Explorer are registered trademarks of Microsoft Corporation in the U.S. and other countries. All other trademarks are the property of their respective owners.

2 Creating a MigoSync Encrypted Zone

After you click the **MigoSync Encrypt** icon for the first time, MigoSync will begin to load. You will have two possible synchronization options:



MigoSync Quick Start Guide



- **Standard Sync** allows you to run MigoSync without any encryption. Once you have activated your account, you will be able to synchronize your computer files without having to enter a password.



- **Encrypted Sync** allows you set a password to protect access to your synchronized computer files.

Once you click **Create Now** and successfully create your MigoSync Encrypted Zone, you will not see this screen again. Upon subsequent logins, you will see only the login screen (see #3, next).

Note: The MigoSync Encrypted Zone feature is not available on all editions of MigoSync.

For more information, refer to the *MigoSync Premium User Guide*.



Copyright © 2007 Migo Software, Inc.

MigoSync and the Migo logo are trademarks of Migo Software, Inc. All Rights Reserved. Windows, Outlook, and Microsoft Internet Explorer are registered trademarks of Microsoft Corporation in the U.S. and other countries. All other trademarks are the property of their respective owners.

3 After Setup: Working with MigoSync Encrypted Zone

Starting MigoSync Encrypted Zone and MigoSync

- 3.1. Insert your device into a computer's USB port.
- 3.2. Double-click the "My Computer" icons (on the desktop or under "Start"). Open the folder for your portable device, and then double-click the **MigoSyncEncrypt** icon.
- 3.3. The MigoSync Encrypted Zone login dialog will open. Type your password and click "OK."
- 3.4. MigoSync will launch; follow the instructions on the screen.



MigoSync Quick Start Guide



4

Changing Your MigoSync Encrypted Zone Password

- 4.1. At the MigoSync Encrypted Zone login screen, click "Settings."
- 4.2. On the next screen, click "Change Password."
- 4.3. Enter your old password. Next, confirm a new password and click "OK."

A screenshot of a Windows dialog box titled "MigoSync - Encrypted Zone Setti...". The dialog has a blue title bar and a close button (X) in the top right corner. Inside the dialog, there is a header area with a padlock icon, the text "MigoSync Encrypted Zone", and the "migo" logo. Below the header, there are four text input fields: "Old Password:", "New Password:", "Confirm New Password:", and "Hint:". The "Hint:" field contains the text "test123". At the bottom of the dialog, there are three buttons: "Delete Encrypted Zone", "Change Password", and "Cancel".

5

Using MigoSync on Your Own PC: Create Profile and Synchronize Your Computer Data

Starting MigoSync

- 5.1. If you haven't yet installed MigoSync, please follow Steps 1 and 2 in the MigoSync Encrypted Zone section before proceeding. Then skip to Step 2 in this guide. If you have already installed Migo, connect your MigoSync-enabled portable device to your computer's USB port.
- 5.2. Double-click the "My Computer" icon, and then double-click the icon representing your portable device to open it.
- 5.3. To use MigoSync without encryption, double-click the MigoSync icon:



To use MigoSync with encryption, double-click the MigoSync Encrypt icon; it looks like this:



- 5.4. Enter your Password, and click "OK." For detailed instructions on using MigoSync Encrypted Zone, please refer to step #2.

Copyright © 2007 Migo Software, Inc.

MigoSync and the Migo logo are trademarks of Migo Software, Inc. All Rights Reserved. Windows, Outlook, and Microsoft Internet Explorer are registered trademarks of Microsoft Corporation in the U.S. and other countries. All other trademarks are the property of their respective owners.

MigoSync Quick Start Guide



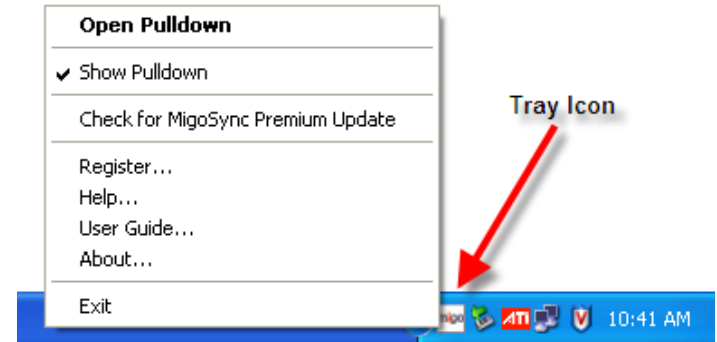
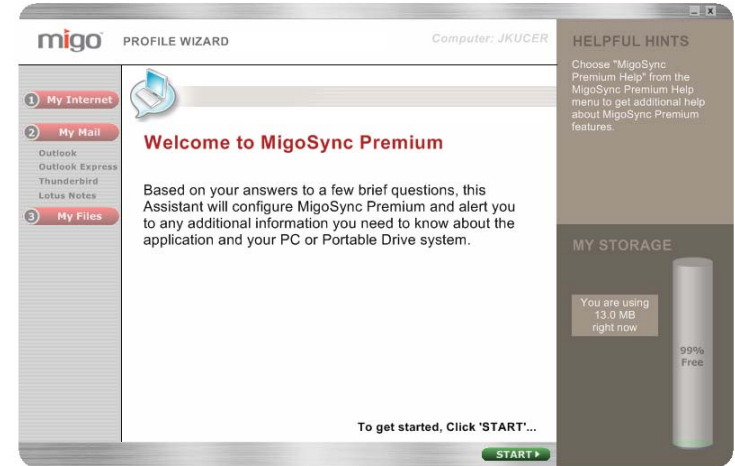
6

Create Your Computer's Profile

Capturing Data and Settings

- 6.1. If you have multiple PCs, MigoSync can create a profile for each of them. Just repeat the steps below for each of your PCs; MigoSync will keep track of each one separately.
- 6.2. Follow the step-by-step instructions in the Profile Wizard to build your profile.
Important: Be sure to click "Finish" at the end of the Wizard to create your profile and fill it with the data from your PC.
- 6.3. After synchronization is done, your PC's profile on your MigoSync-enabled device will contain your data, ready for use on other computers.

IMPORTANT! Do not remove your device while you are using MigoSync. Doing so could result in the loss of some or all of your data. To ensure the integrity of your encrypted data, always exit MigoSync from the tray menu (by right-clicking the Migo tray icon).



Copyright © 2007 Migo Software, Inc.

MigoSync and the Migo logo are trademarks of Migo Software, Inc. All Rights Reserved. Windows, Outlook, and Microsoft Internet Explorer are registered trademarks of Microsoft Corporation in the U.S. and other countries. All other trademarks are the property of their respective owners.

MigoSync Quick Start Guide



7

Using MigoSync on Other PCs (Starting MigoSync on Another Computer)

- 7.1. Connect your device to the PC's USB port and launch MigoSync, as you did in Step 5 ("Starting MigoSync").
- 7.2. If it is your PC and you want to create a profile of this one also, select "Add New Profile" and then follow the instructions as you did in Step 6 to create the profile.
- 7.3. If you are only temporarily using the PC and want to work with data in an existing profile, select that profile to begin.



8

Using Your MigoSync Profile(s) on Another Computer

- 8.1. Enter a password (if required).
- 8.2. A Migo tab appears at the top of the screen; click on it. Your profile appears as a miniature desktop photo of your own PC, along with the nickname you gave it. If you have profiled multiple PCs, each will have its own picture and name. Click on the one you want to use, and your profile will be activated.
- 8.3. Now that you've logged in to your PC's profile, work on your own data, send and receive email etc., as if you were using your own PC.
- 8.4. After you have finished working, save all your files and click on the log-out button on the taskbar at the bottom of the screen. MigoSync will add your new data to your PC's profile and remove it from the PC you have been borrowing. At the prompt, click "OK."
- 8.5. If you are using MigoSync without MigoSync Encrypted Zone, you can disconnect your device. If you are using MigoSync Encrypted Zone, exit MigoSync from the tray menu (by right-clicking the Migo tray icon).

Copyright © 2007 Migo Software, Inc.

MigoSync and the Migo logo are trademarks of Migo Software, Inc. All Rights Reserved. Windows, Outlook, and Microsoft Internet Explorer are registered trademarks of Microsoft Corporation in the U.S. and other countries. All other trademarks are the property of their respective owners.

9

Synchronizing New Data With Your Own PC

Return MigoSync to Your Own PC

- 9.1. Insert your MigoSync-enabled device into your PC's USB port and launch MigoSync as in step #5, "Starting MigoSync." When the "Welcome" screen appears, click "Synchronize Now" to update your computer with work you've done on the road.
- 9.2. If you'd like to make changes to your PC's MigoSync profile before you synchronize, choose either the *Profile Wizard* or *Advanced Configuration* and proceed as you did in Step 6.